

Utsunomiya Kyowa University Faculty of City Life

Information for International Students

International Student Fees

(Q1) How much are the fees for first year students?

(A1) Upon enrollment, 515,000 yen must be paid (this includes a 200,000 yen enrollment fee).

The fee for the first year is 830,000 yen.

515,000 yen of the 830,000 yen should be paid by the deadline for each enrollment procedure, the remaining 315,000 by the beginning of the next semester.

However, there is a separate fee of approximately 50,000 yen for international student insurance (described below), to be paid when completing the enrollment procedures.

(Q2) What about the fees for students in their second year or above?

(A2) Starting from the second year, fees are 630,000 yen per year, to be paid in two installments of 315,000 yen each in the spring and fall.

Fees should be paid by April 30 in the spring semester, and September 30 in the fall semester.

Support for International Students

(Q3) Is there a discount for international student fees?

(A3) There is a tuition fee reduction system for international students; all international students pay fees that are reduced by 41% from those of Japanese students. The fee noted in the application guidelines is the amount after the discount.

(Q4) Does the university have its own scholarship system?

(A4) We have a special entrance examination system, whereby those students with outstanding results pay half the tuition fees for the first year.

International students who gain top marks in the international student entrance examinations are

eligible for scholarships, and pay tuition fees of 190,000 yen for the first year, half of 380,000 yen.

Further, the second round entrance examination fee is waived for those aiming for scholarships who complete enrollment procedures having passed the first round general entrance examination, or the examination for those recommended by designated schools.

(Q5) Is there support for those in their second year or above?

(A5) From the second year, we have a continuing system for reducing tuition fees by half for students who obtained outstanding results the previous year.

(Q6) Is there any other support?

(A6) The University will provide the fees for qualifying examinations, such as the Japanese Language Proficiency Test, the BJT Business Japanese Proficiency Test, and bookkeeping certification. The fees will be provided regardless of the result. The University will provide fees up to three times for the same examination (at the same level).

(Q7) Where are the current international students from?

(A7) Many of our international students are from Asia, such as those from China, South Korea, and Vietnam etc.

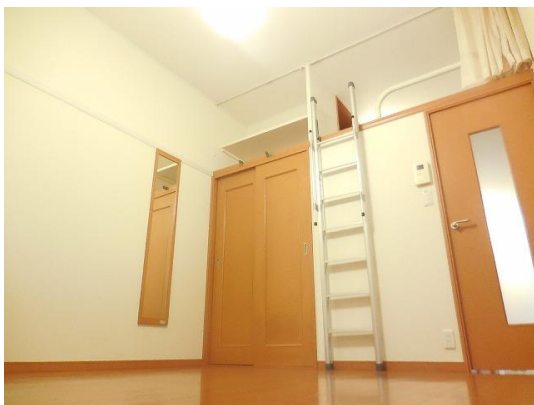
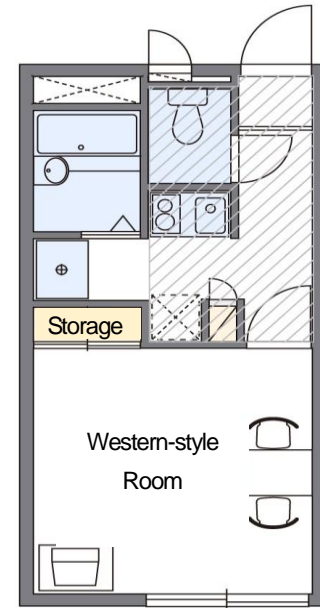
(Q8) Is there a student dorm at the university?

(A8) There is accommodation for international students. International student accommodation is offered rent-free for six months after enrollment (first year students who wish to can move in for six months; utilities are to be paid for by the student).

(Q9) What kind of rooms are available in the international student accommodation?

(A9) The rooms are private apartments leased by the University, equipped with a washing machine and fridge. Normally, there are two people per room.

(Photographs of international student accommodation)



(Q10) Is there support for students who do not move into the international student accommodation?

(A10) The University will pay a 10,000-yen housing support grant each month to international students who have contracted to rent a private apartment instead of moving into the international student accommodation. The grant will be given to students in their first year at the University for one year.

(Q11) What paths do the University's graduates take?

(A11) Our graduates follow various paths, some going on to graduate schools in Japan, others finding employment in Japan or returning to their home countries and finding employment there.

Information about employment, and the procedures for being employed in Japan, is available in the International Exchange Center.

(Q12) What about lifestyle support for international students?

(A12) The International Exchange Center provides empathetic support for international students' daily lives. The staff at the International Exchange Center also provide support for the procedures of the Immigration Bureau of Japan. In addition, all of the international students of this university take out international student insurance managed by Japan Educational Exchanges and Services.

(Q13) What is international student insurance?

(A13) International student insurance is general lifestyle insurance for international students, managed by Japan Educational Exchanges and Services. Students can receive 24-hour accident or illness cover, and the fees for bringing family to Japan etc. in the case of a major accident are also covered. All international students at this university take out this insurance, the fees for which (approximately 40,000 yen for four years) are paid upon enrollment. The International Exchange Center offers help with the procedures involved in taking out insurance, and making a claim due to an accident.

The Advantages of Utsunomiya Kyowa University

Proximity Utsunomiya City in Tochigi Prefecture is 50 minutes away from Tokyo by the JR Tohoku Shinkansen.

Utsunomiya Kyowa University's Utsunomiya City Campus is a six-minute walk from JR Utsunomiya Station.

Friendliness We have a small number of students, but we take pride in the closeness of our students, teachers, and staff, and their friendly interactions.

Inquiries relating to international student entrance examinations:

Faculty of City Life, Utsunomiya Kyowa University, 1-3-18 Odori, Utsunomiya, 320-0811
TEL: +81-28-650-6611 FAX: +81-28-650-6612 e-mail: kokusai@kyowa-u.ac.jp
URL: <http://www.kyowa-u.ac.jp>